

# MOD TW100



Light Efficiency:

31 Lumen/Watt

Light Quality:

CRI: 94.4

Color Temperature:

5836 K

Output: 948 lm

Peak: 1706 cd

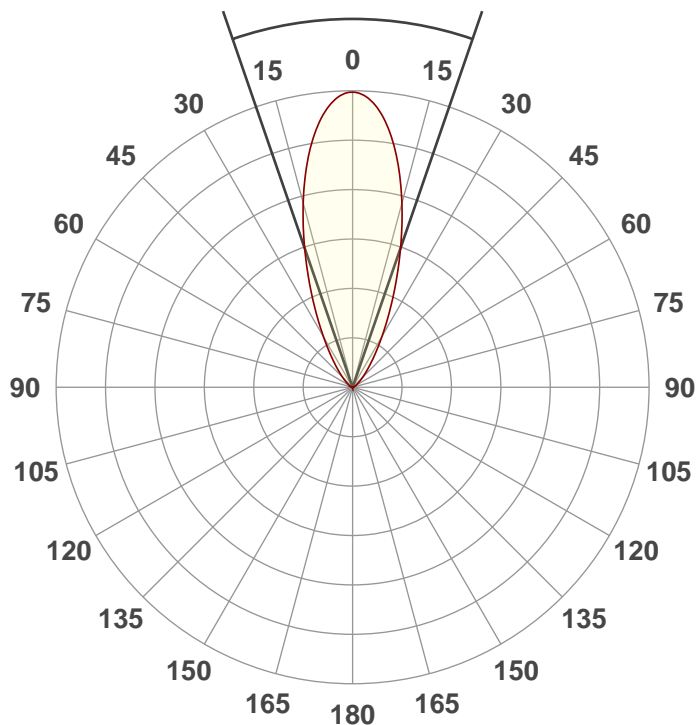
Power: 30.9 W

PF: 0.56



Beam Angle

38°



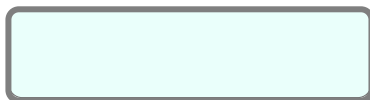
Test:

60Deg CW

Date:

11/27/2018

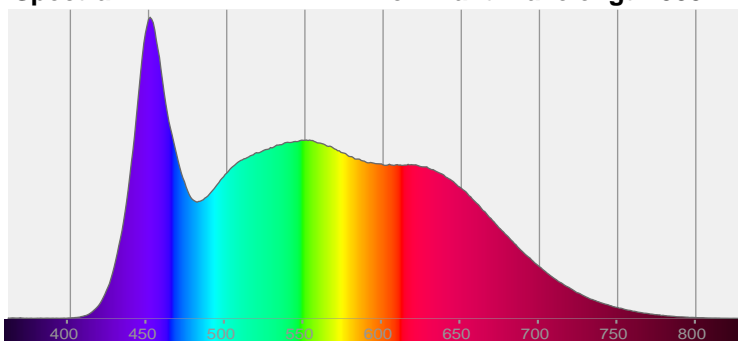
Note:



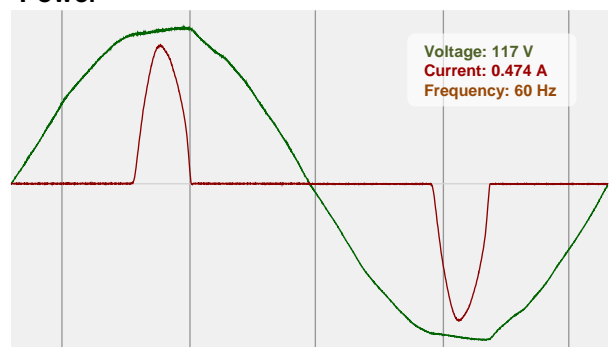
CIE 1931  
x: 0.325  
y: 0.337

Spectra

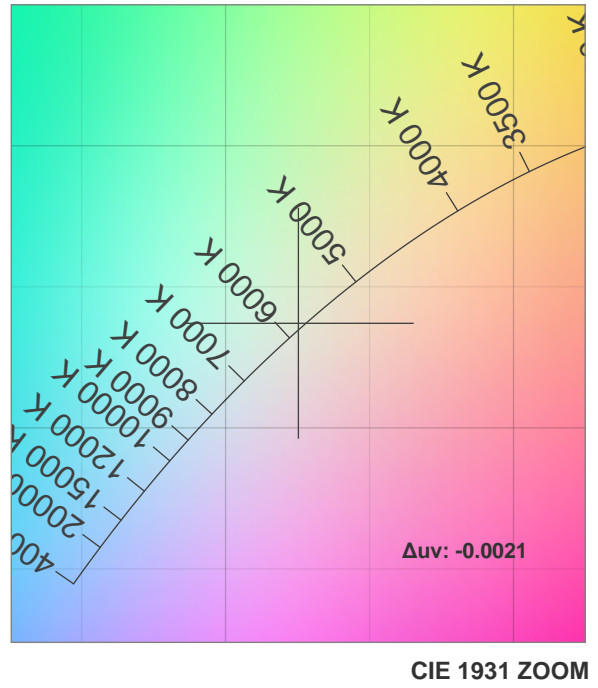
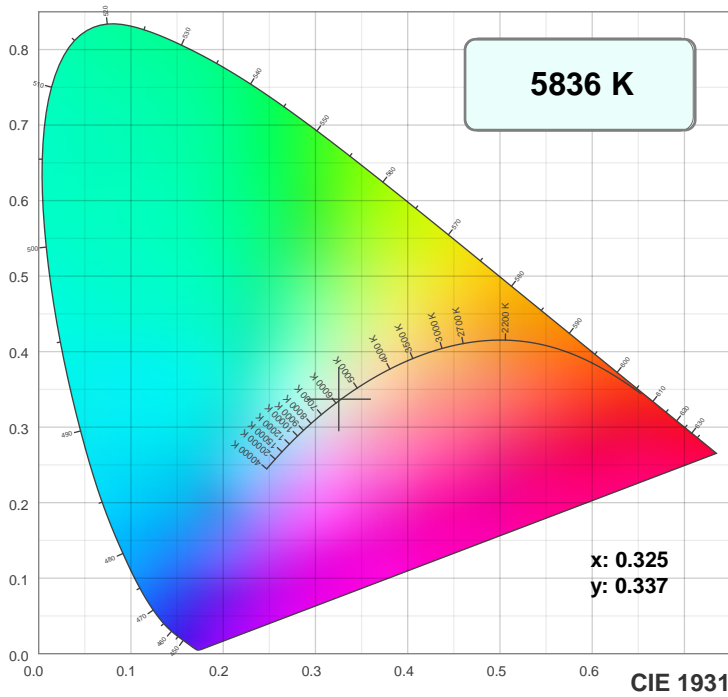
Dominant Wavelength: 583nm



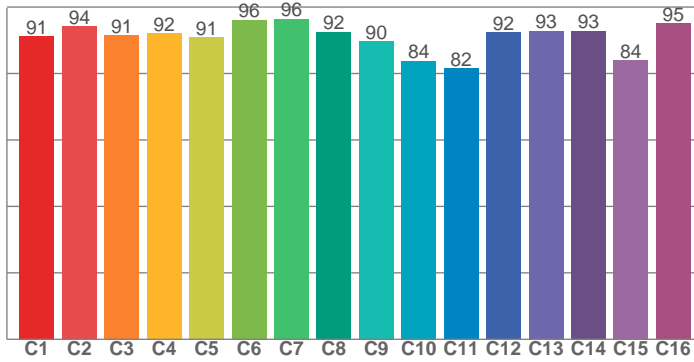
Power



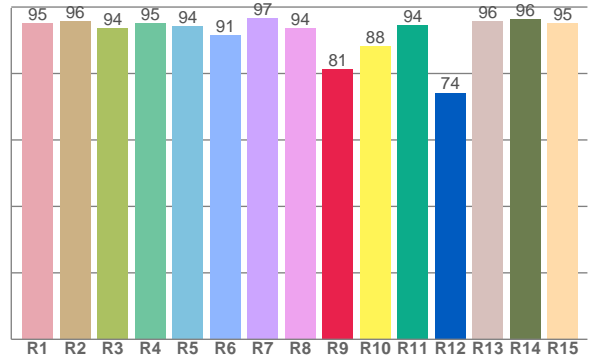
## Color Details



TM30: 90.8



CRI: 94.4 (R1-R8)



CRI R values, only R1-R8 are used to calculate final CRI value

R1	R2	R3	R4	R5	R6	R7	R8	R9	R10	R11	R12	R13	R14	R15
95.1	95.7	93.7	95.0	94.1	91.5	96.7	93.6	81.3	88.1	94.4	74.2	95.6	96.4	95.2

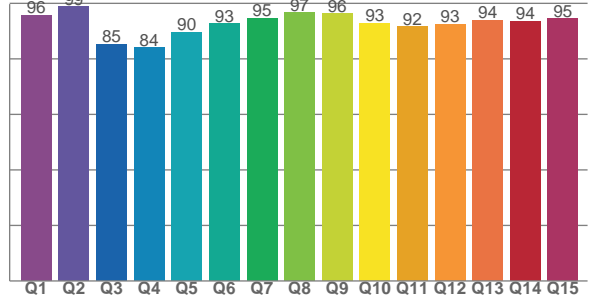
TM30 C values, 16 binned values out of total of 99 C values

C1	C2	C3	C4	C5	C6	C7	C8	C9	C10	C11	C12	C13	C14	C15	C16
91.2	94.2	91.4	92.1	90.8	96.1	96.5	92.5	89.7	83.8	81.5	92.4	92.9	92.9	84.0	95.0

CQS Q values

Q1	Q2	Q3	Q4	Q5	Q6	Q7	Q8	Q9	Q10	Q11	Q12	Q13	Q14	Q15
95.7	98.8	85.3	84.0	89.7	92.8	94.6	96.7	96.4	92.9	91.5	92.6	94.0	93.6	94.5

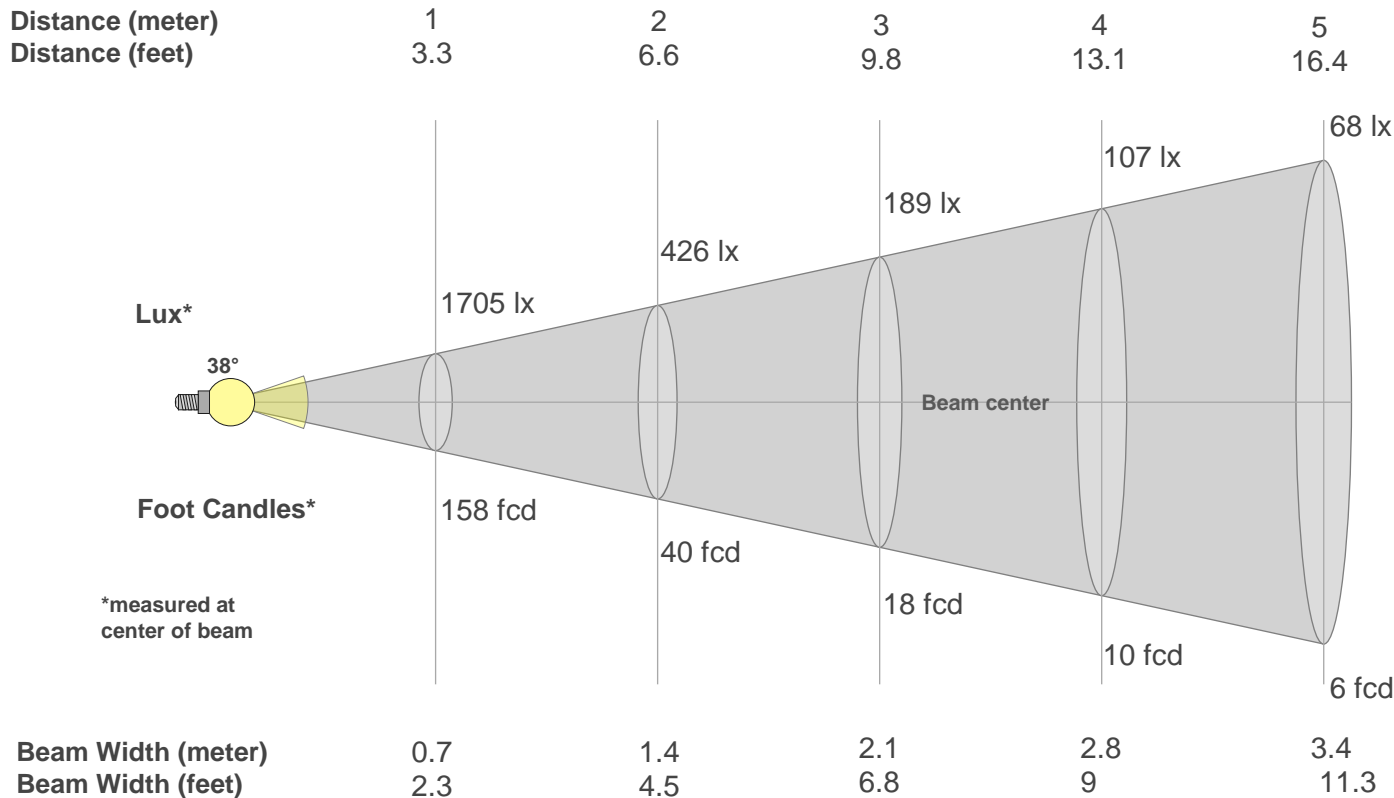
CQS: 91.9



## Color Parameters

Color Temperature	Color Rendering Index	Red Component	Color Fidelity	Color Gamut	Color Quality Scale	Color Coordinate CIE 1931	Color Coordinate CIE 1931	Color Coordinate	Color Coordinate	Color Deviation from Black Body
CCT	CRI	CRI R9	TM30 Rf	TM30 Rg	CQS	x	y	u	v	$\Delta uv$
5836 K	94.4	81.3	90.8	99.8	91.9	0.325	0.337	0.203	0.316	-0.0021

## Beam Details



### Beam Intensities from 1-20m

m	1	2	3	4	5	6	7	8	9	10	11	12	13	14	15	16	17	18	19	20
ft	3.3	6.6	9.8	13.1	16.4	19.7	23	26.2	29.5	32.8	36.1	39.4	42.7	45.9	49.2	52.5	55.8	59.1	62.3	65.6
lx	1705	426	189	107	68	47	35	27	21	17	14	12	10	9	8	7	6	5	5	4
fcd	158.4	39.6	17.6	9.9	6.3	4.4	3.2	2.5	2	1.6	1.3	1.1	0.9	0.8	0.7	0.6	0.5	0.5	0.4	0.4

### Intensities in 0° C-plane

0°	2°	4°	6°	8°	10°	12°	14°	16°	18°	20°	22°	24°	26°	28°	30°	32°	34°	36°	38°
1705	1693	1654	1591	1507	1406	1291	1168	1040	915	793	680	577	485	406	337	280	231	191	158
100%	99%	97%	93%	88%	82%	76%	69%	61%	54%	47%	40%	34%	28%	24%	20%	16%	14%	11%	9%

### Intensities in 90° C-plane

0°	2°	4°	6°	8°	10°	12°	14°	16°	18°	20°	22°	24°	26°	28°	30°	32°	34°	36°	38°
1705	1693	1654	1591	1507	1406	1291	1168	1040	915	793	680	577	485	406	337	280	231	191	158
100%	99%	97%	93%	88%	82%	76%	69%	61%	54%	47%	40%	34%	28%	24%	20%	16%	14%	11%	9%

### Intensities in 180° C-plane

0°	2°	4°	6°	8°	10°	12°	14°	16°	18°	20°	22°	24°	26°	28°	30°	32°	34°	36°	38°
1705	1692	1652	1589	1504	1403	1289	1165	1040	914	794	682	580	489	410	342	284	235	195	161
100%	99%	97%	93%	88%	82%	76%	68%	61%	54%	47%	40%	34%	29%	24%	20%	17%	14%	11%	9%

### Intensities in 270° C-plane

0°	2°	4°	6°	8°	10°	12°	14°	16°	18°	20°	22°	24°	26°	28°	30°	32°	34°	36°	38°
1705	1692	1652	1589	1504	1403	1289	1165	1040	914	794	682	580	489	410	342	284	235	195	161
100%	99%	97%	93%	88%	82%	76%	68%	61%	54%	47%	40%	34%	29%	24%	20%	17%	14%	11%	9%

Beam Angle 50%	Field Angle 10%	Cutoff Angle 2,5%	Intensity Ratio in 120° Cone	Intensity Ratio in 90° Cone
38°	74.6°	105.3°	98.0%	91.8%